



Background and History

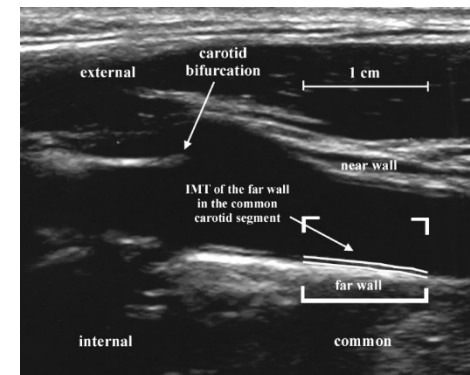
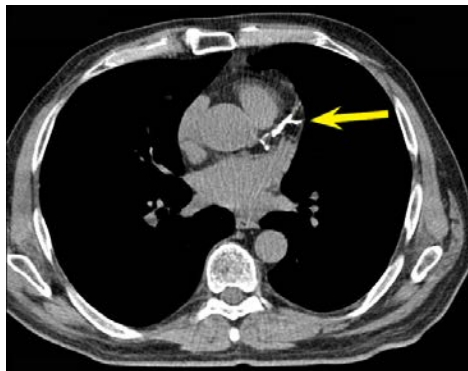
Craig Johnson

January 18, 2022

MESA Description

The Multi-Ethnic Study of Atherosclerosis (MESA) is a study of:

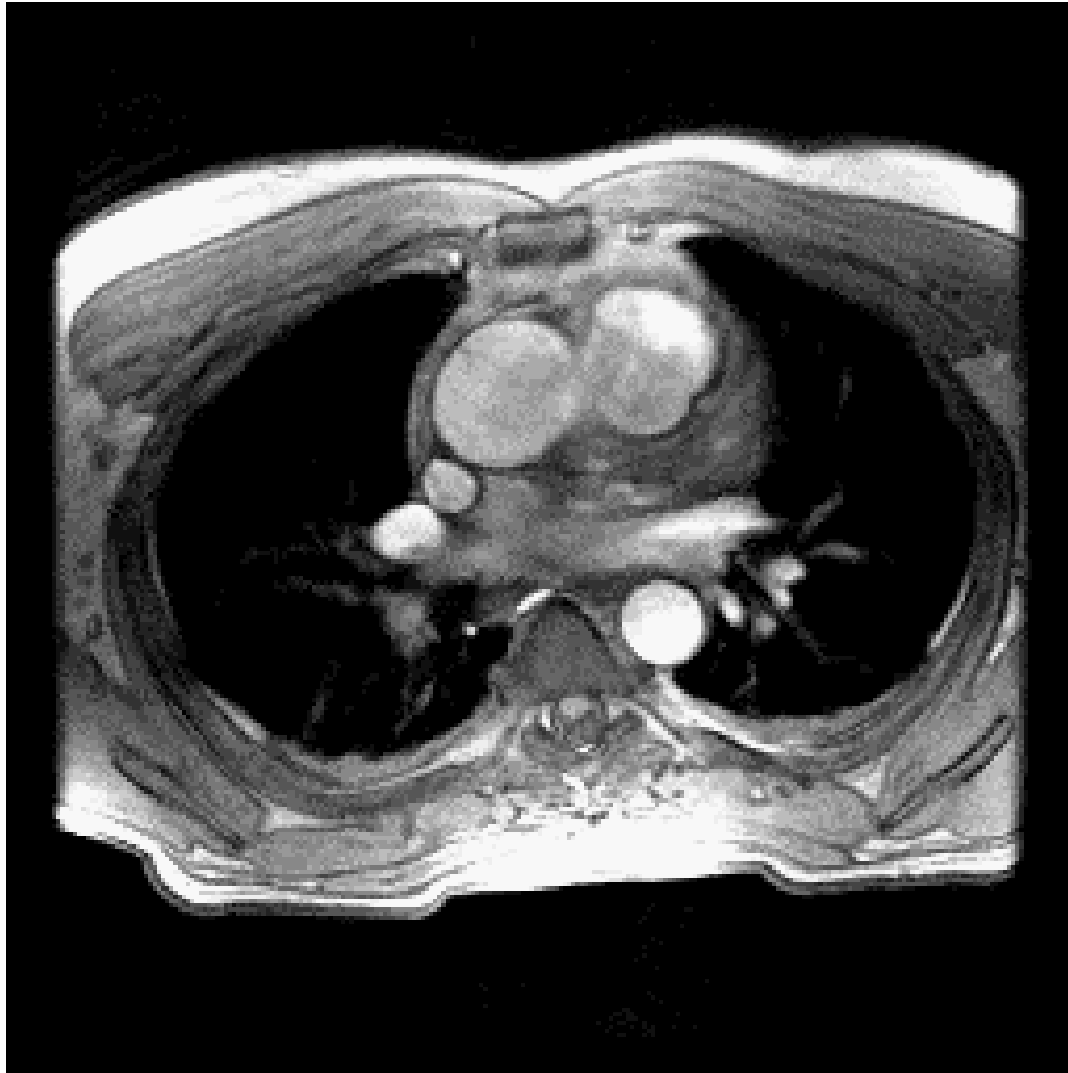
- the characteristics of subclinical cardiovascular disease (disease detected non-invasively before it has produced clinical signs and symptoms)



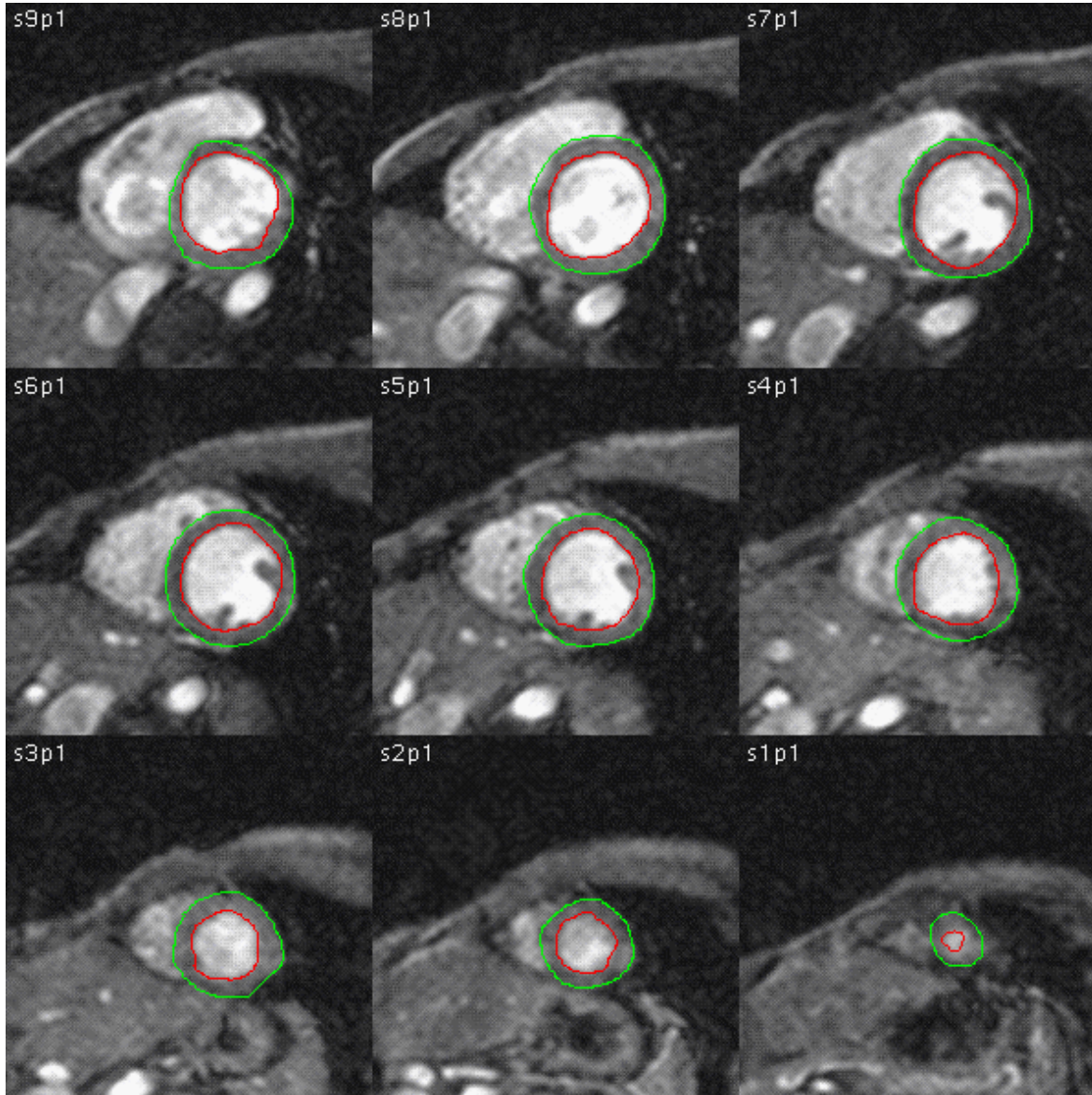
MRI Images



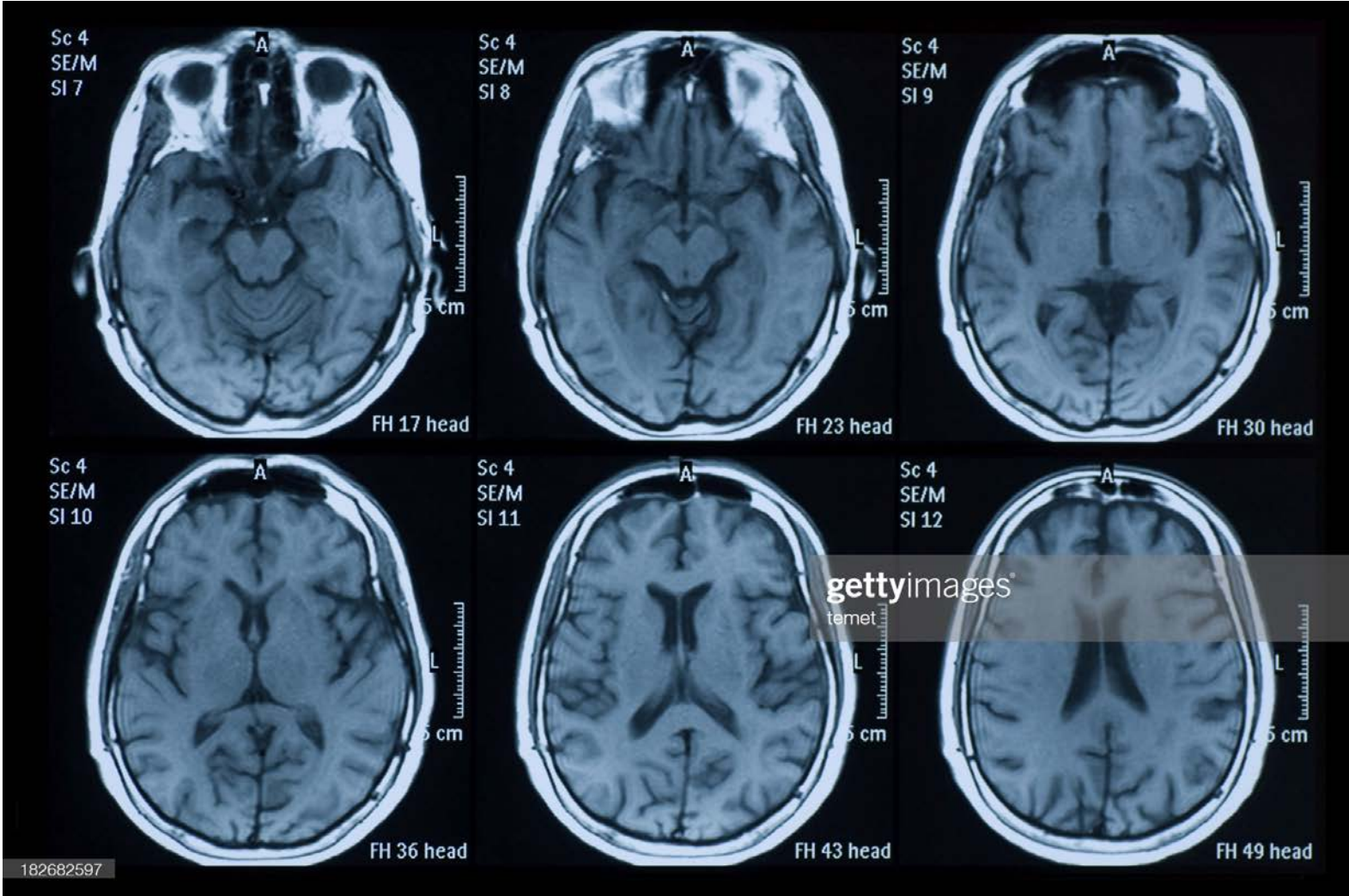
MRI Images



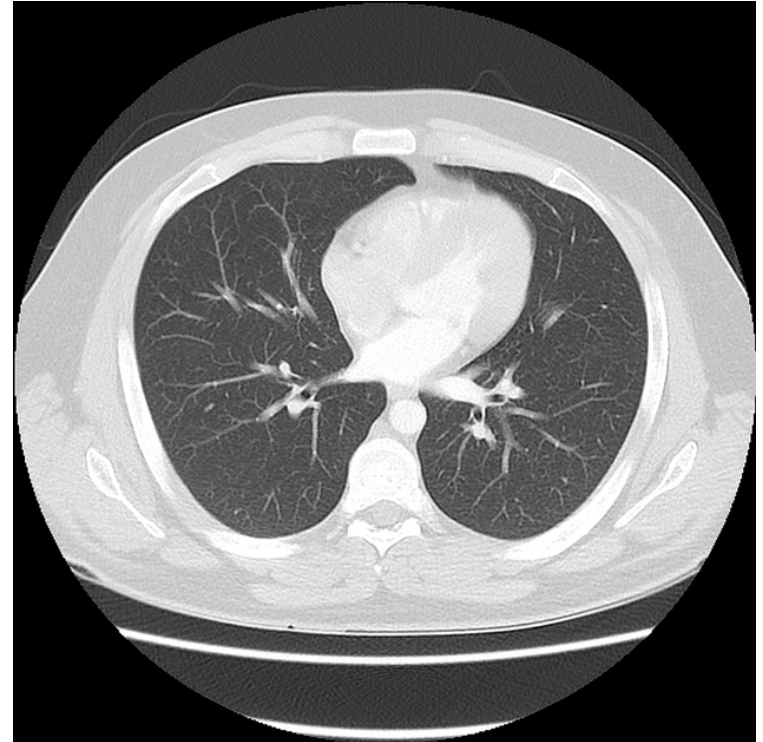
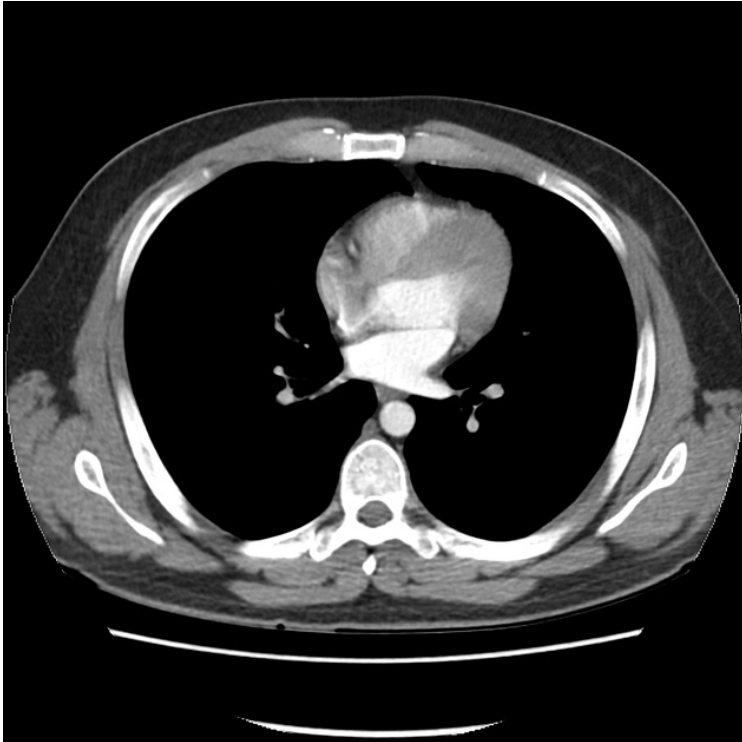
MRI Images



Brain MRI Images



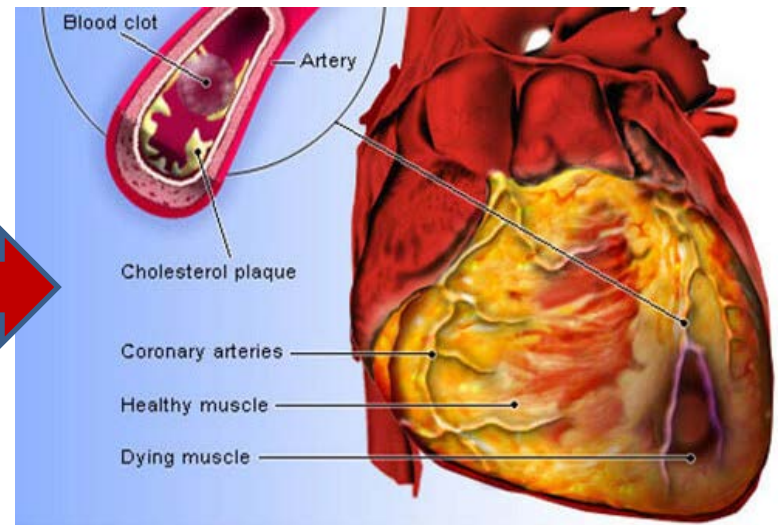
Lung CT Images



MESA Description

The Multi-Ethnic Study of Atherosclerosis (MESA) is a study of:

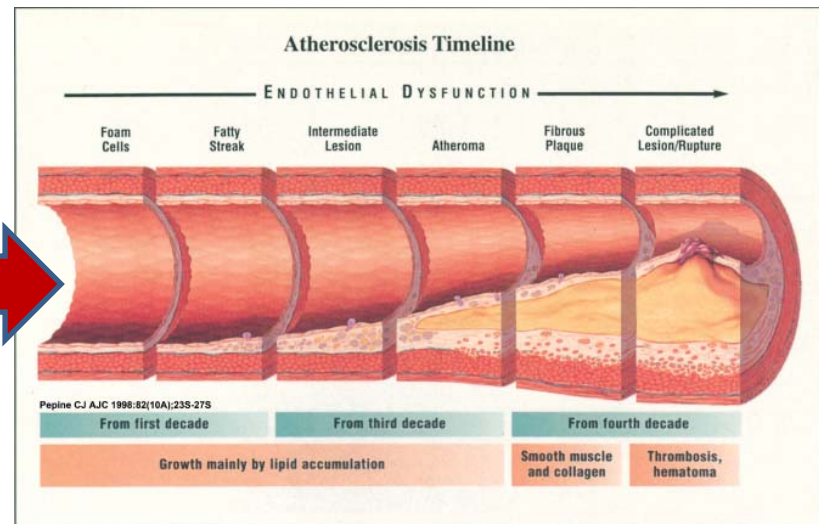
- the risk factors that predict progression to clinically overt cardiovascular disease



MESA Description

The Multi-Ethnic Study of Atherosclerosis (MESA) is a study of:

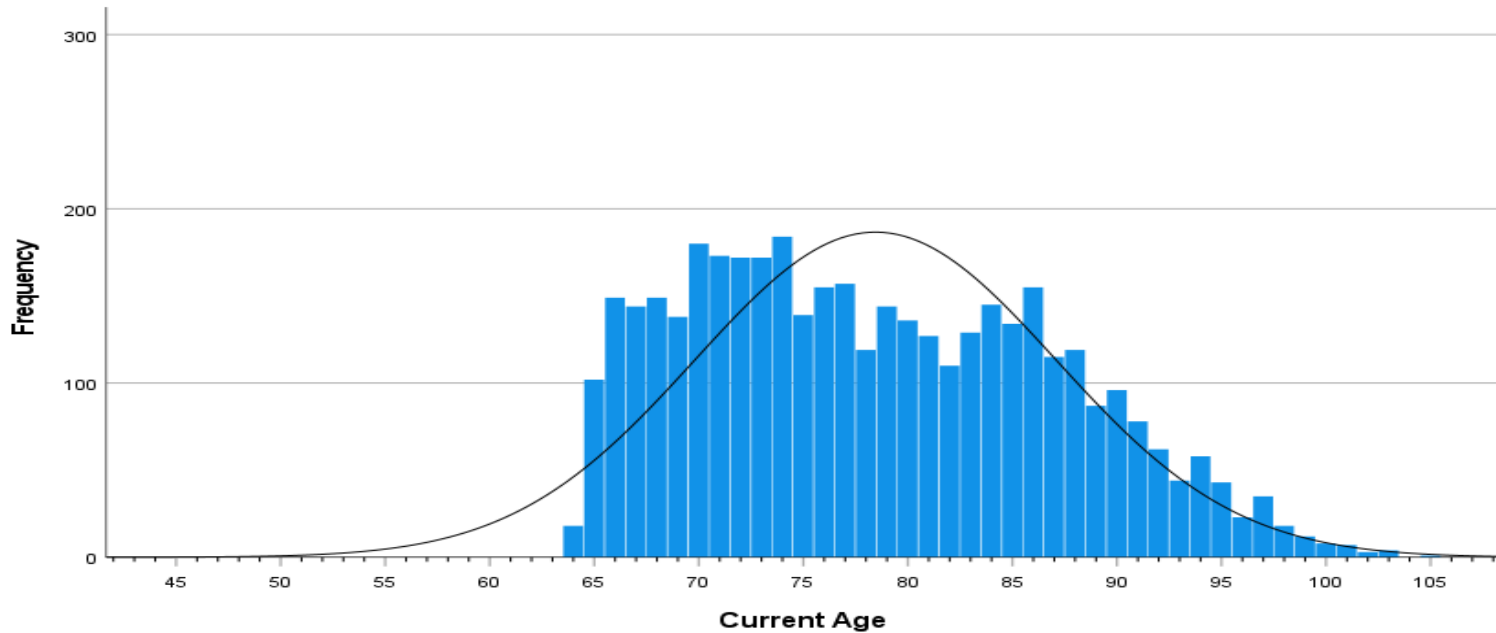
- the risk factors that predict progression of subclinical disease



Cohort Description

- MESA researchers study a diverse, population-based sample of **6,814 asymptomatic men and women (53%) aged 45-84** from six field centers across the United States.
 - 38% percent are white
 - 28% percent African-American
 - 22% percent Hispanic
 - 12% percent Asian, predominantly of Chinese descent.
- In Clinic Visits:
 - Baseline Exam (Exam 1) July 2000-July 2002
 - Follow-up Exams 2 (2002 – 2004), 3 (2004-2005), and 4 (2005-2007)
 - Exam 5 (2010 – 2012)
 - Exam 6 (2016 – 2018)
- Participants are contacted every 9 to 12 months throughout the study to assess clinical morbidity and mortality.

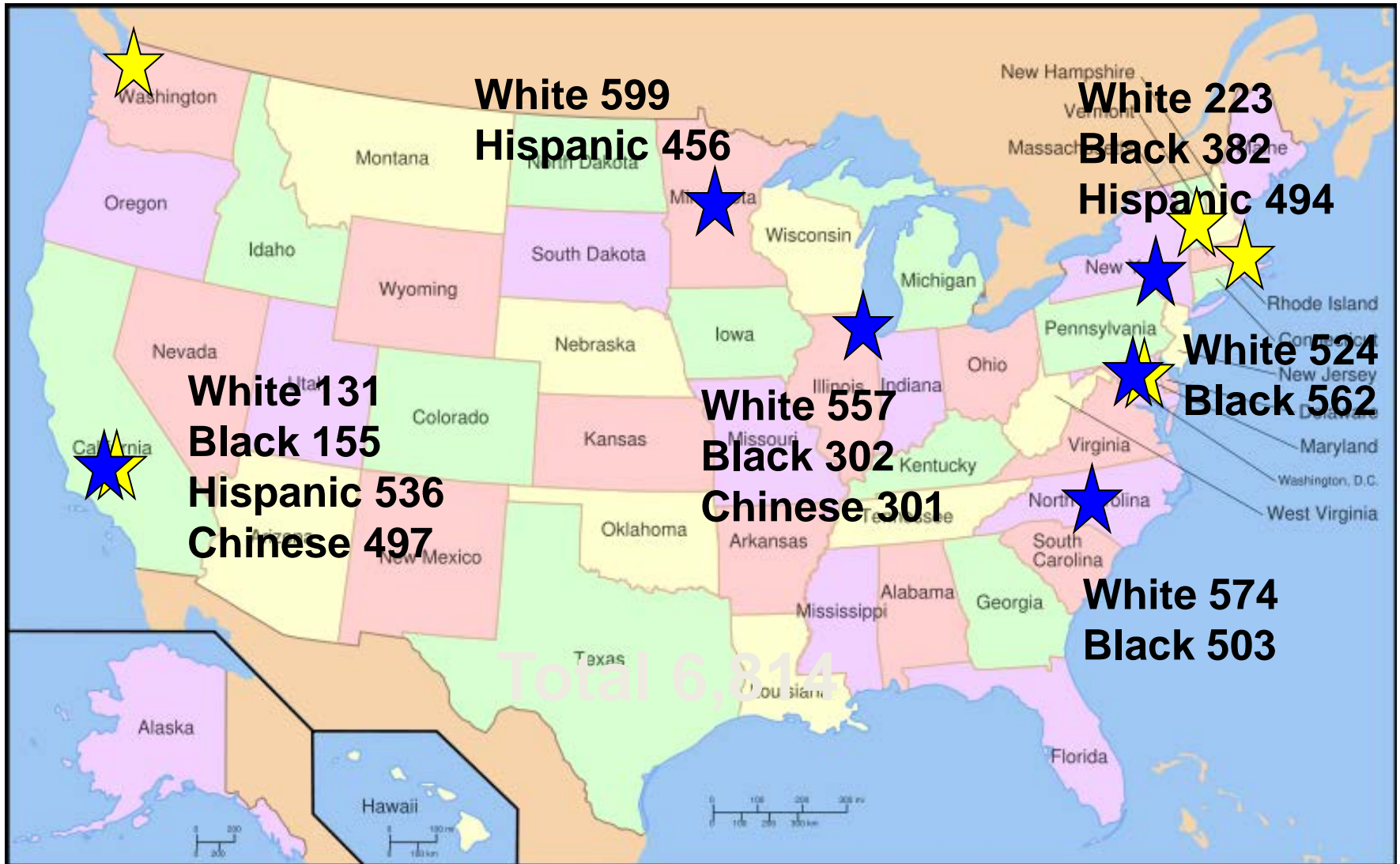
Age distribution change since baseline



	Mean	SD	Min	25th %ile	Median	75th %ile	99%ile	Max
Current Age	78.5	8.64	64	71	77	85	98	105

- Age is an important retention factor
- E7 age range is expected to be 65-100 w/ median 77.

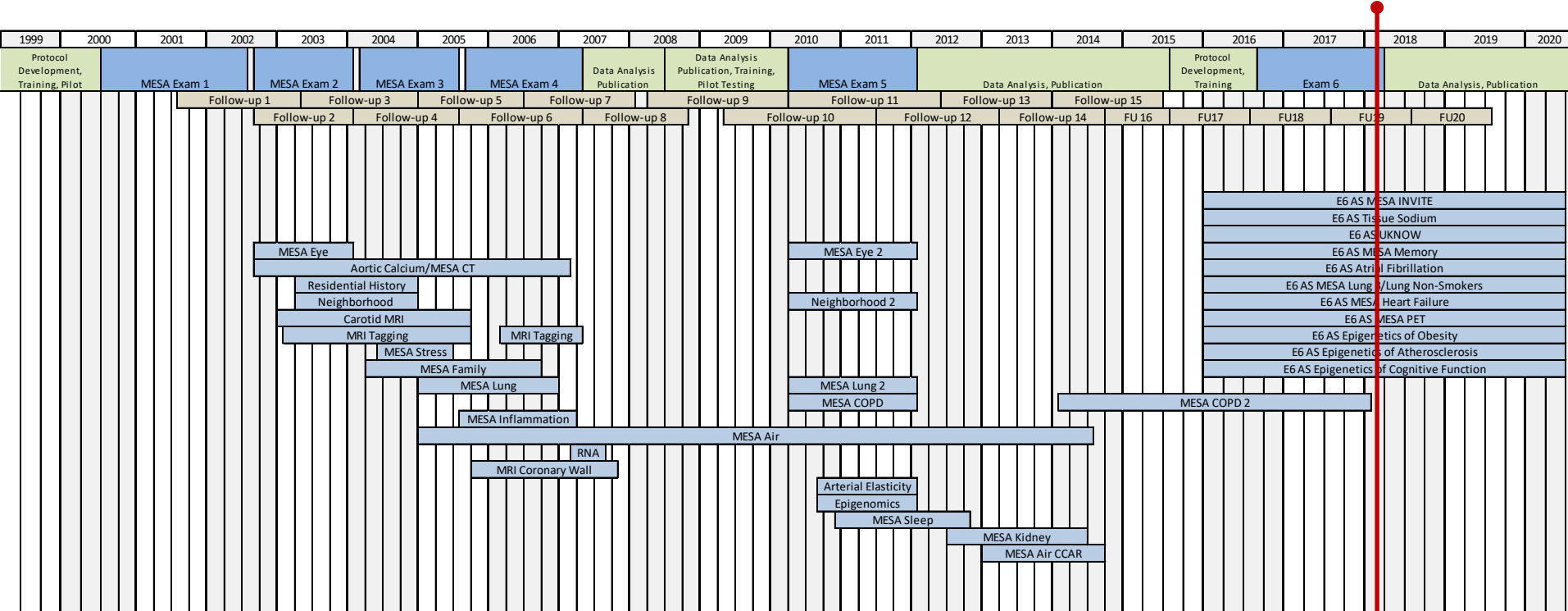
Distribution of participants by MESA Field Centers and Ethnicity



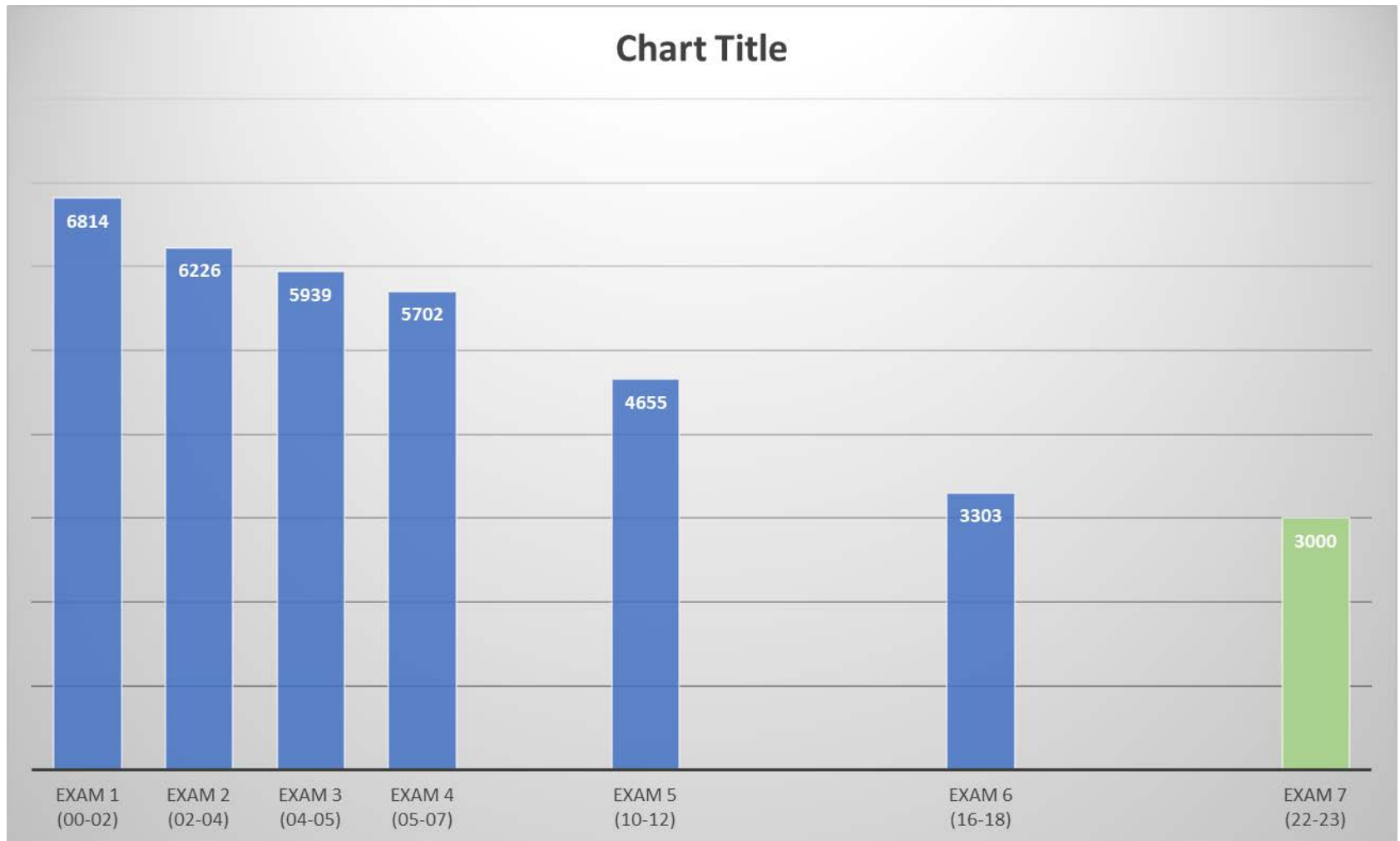
MESA Centers Important Ancillary Study Investigator Institutions



MESA Timeline



MESA Enrollment and Retention

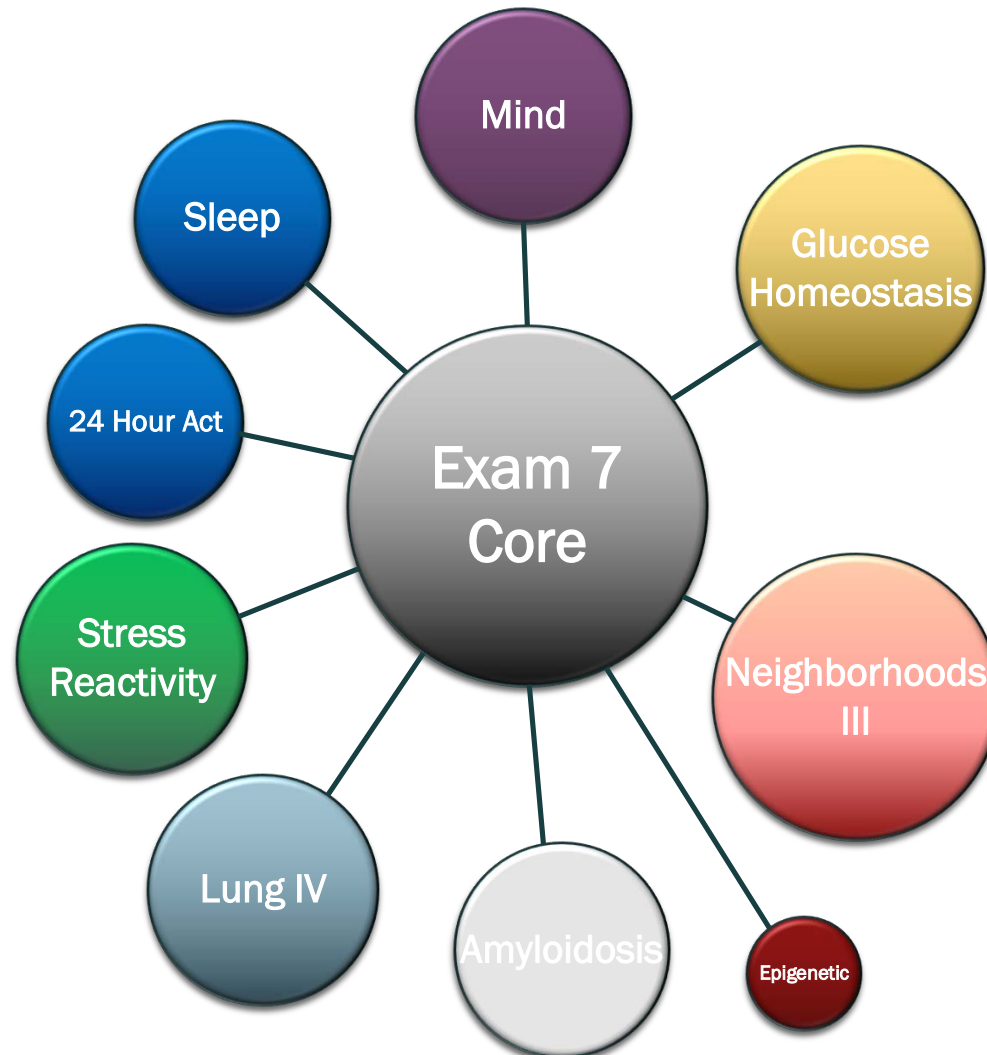


Multi-Cohort Collaborative Efforts

- Cross-Cohort Collaboration
- COMBI-BIO
- Emerging Risk Factors Consortium
- Several genetics consortiums including CARe, CHARGE, TOPMed, ...

- MESA has a long track record of collaborating with non-affiliated investigators.

Exam 7: Ancillary Studies



Biological Specimen repository

- Specimens Repository maintained at University of Vermont
- Specimens types include EDTA, SCAT, Serum, Citrate*
 - Exam 1: 6,600+ w/ ≥ 1.0 mL
 - Exam 2: 6,150+ w/ ≥ 1.0 mL
 - Exam 3: 5,800+ w/ ≥ 1.0 mL
 - Exam 4: 5,550+ w/ ≥ 1.0 mL
 - Exam 5: 4,500+ w/ ≥ 1.0 mL
 - Exam 6: 3,000+ w/ ≥ 1.0 mL

Image Repository

- Images
 - CT (Cardiac, Abdominal, Lung)
 - MRI (Cardiac, Carotid, Brain)
 - Ultrasound (Carotid, brachial FMD)
 - Echo
 - Retinal Photos
- Raw data/tracings
 - ECG
 - Sleep (polysomnography, actigraphy)
 - Pulsewave



Clinical Events

- Medical records reviewed/adjudicated
- NDI and CMS enhanced
- Events data released thru 2018 Calendar year
 - Average of 12.26 yrs of surveillance (median 16.7 yrs)
 - 533 Hard CHD Events (MI, rCA, CHD Death)
 - 1,148 All CVD Events (CHD + angina* + stroke + other CVD death)
 - 359 MI events
 - 415 HF events
 - 360 Stroke events

Genetics

- Candidate Gene Rounds 1 & 2 (2847; 3000 SNPs)
- CARE (Classic cohort; IBC 50K SNPs)
- SHARe (Classic+Air+Family; 1M SNPs)
- Candidate Gene Round 3 (Classic cohort)
- Exome Sequencing
- Exome Chip (250K SNPs)
- MetaboChip (218K SNPs)
- TOPMed Whole Genome Sequencing (2016)

- Multi-Omics
(transcriptomics, methylomics, metabolomics, proteomics)

MESA Productivity

- 1,962 peer reviewed journal publications
- Over 300 ancillary studies
 - 7 New Ancillary Studies associated with Exam 7
 - Specimen repository (all exams) and scan images are frequently used for assessment of new/novel biomarkers.

MESA Investigators (February 2014)



- MESA is bigger than its investigators
- 1 of 12 original MESA Steering Committee Members remains
- There have been 4 Project Officers